



Hazlehurst Community Primary School

Geoffrey St, Ramsbottom, Bury, Lancs. BL0 9PQ Tel: 01706 822002 Fax: 01706 823273

Website: www.hazlehurstschool.co.uk Email: hazlehurst@bury.gov.uk

Headteacher: Mr M Golding B Mus (hons)

Deputy: Mrs R Roberts B Ed (hons)

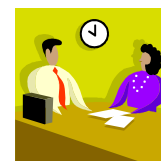
2 October 2009

Newsletter Number 3

Dear Parent

Thanks to everyone who supported our recent Harvest Festival. The service was very well attended and every child in the school made a contribution. We estimate that over £350 worth of groceries were donated to the Porch Boxes charity appeal and our fresh food hampers made lovely gifts for some local elderly residents. Well done!

There will be a **Parents' Evening on Thursday 15 October** between 6.00 pm and 8.30 pm. Or alternatively, appointments can be made during the morning of the same day up to 10.30 am. Please **return the slip by Monday 12 October** to request an appointment slot. We will then contact you to confirm the time. Please use the morning appointments if possible. In order to keep to our appointment timetable, it will be necessary for discussions to be fairly brief (approximately five minutes per pupil). If there are any other matters you wish to discuss with me, please get in touch.



Just a quick reminder that children who have packed lunches should not bring any food containing nuts, including peanut butter and chocolate bars with nuts. This is to avoid allergic reactions amongst children who are sensitive to nuts.

There will be a non-uniform day on Friday 9 October in aid of Cancer Relief. Children are invited to wear an item coloured yellow or pink – the charity's colours, and make a £1 donation. At 2.45 pm on the same day there will be a Coffee Afternoon in the school hall. You are most welcome!

Tickets are now on sale (£4) for our Fashion Show at 7.30 pm on Thursday 22 October – doors open at 7.00 pm. Please come along and pick up a bargain!

Yours sincerely

Mr M Golding
Headteacher

✂-----

Parents' Appointments – Thursday 15 October 2009

Please tick your preferred period of time

9.10 – 10.30 am	
6.00 – 7.00 pm	
7.00 – 7.45pm	
7.45 – 8.30 pm	

Name of child / childrenSigned
For return by Monday 12 October 2009